

DOWNTOWN
RESIDENCY

@Dhapakhel

DOWNTOWN HOUSING

WE ARE A GROUP OF PASSIONATE ARCHITECTS, DESIGNERS, ENGINEERS, AND BUILDERS WHO AIM TO PROVIDE SAFE, COMFORTABLE, AND INNOVATIVE HOMES TO OUR CLIENTS. DOWNTOWN WAS ESTABLISHED IN 1992 WITH THE PURPOSE OF SUSTAINABLY CATERING TO THE GROWING URBAN POPULATION. IN THE LAST TWO DECADES, WE HAVE SPECIALIZED IN THE DEVELOPMENT OF RESIDENTIAL HIGH-RISE BUILDINGS TO LUXURY INDIVIDUAL BUNGALOWS. OUR GOAL IS TO EFFICIENTLY AND SUSTAINABLY DEVELOP INNOVATIVE SMART HOMES WHILE CONTRIBUTING TO THE PLANNED URBANIZATION OF OUR CITIES. WE PLAN TO BECOME THE STEPPING STONE FOR PEOPLE TO ADVANCE INTO THE FUTURE OF URBAN LIVING.





OUR MISSION

WE WANT TO IMPROVE THE LIVING STANDARDS OF ALL THOSE LIVES WE TOUCH AS WELL AS BE ABLE TO YIELD RETURNS FOR OUR CLIENTS, ALWAYS A LEVEL ABOVE THE REST. WE PLAN TO ACHIEVE THIS BY EXTENDING OUR OPERATIONS AND MAINTENANCE SUPPORT TO OUR PROJECT EVEN AFTER ALL UNITS HAVE BEEN HANDED OVER.

OUR VISION

TO ENSURE THAT EVERY CITIZEN IN OUR REGION, REGARDLESS OF THEIR ECONOMIC STATUS, HAS GOOD OPTIONS AND COMFORT IN WHERE THEY LIVE, AND OPPORTUNITIES TO REACH THEIR FULL POTENTIAL. A SENSE OF PRIDE AND RESPECT FOR OTHERS, WE WILL PURSUE PERSONAL RESPONSIBILITY, A SENSE OF SPIRIT, AND A COMMITMENT TO THE SUCCESS OF OUR EMPLOYEES, OUR CLIENTS, AND OUR COMMUNITY.

AN EXCLUSIVE AREA

ENJOY THE MOST AFFLUENT SUBURB OF LALITPUR CITY. CONVENIENTLY LOCATED AT DHAPAKHEL, SOUTH OF LALITPUR CITY, 4.8KMS FROM THE CITY CENTER, THE COMMUNITY OFFERS A FULLY SELF CONTAINED LUXURIOUS ABODE IN A VERY CLOSE PROXIMITY TO NATURE AS WELL AS MAIN CITY. WHETHER FOR BUSINESS OR LEISURE THIS AREA HAS EVERYTHING TO OFFER: MAJOR BUSINESS, EDUCATION INSTITUTIONS AND HOSPITALS.

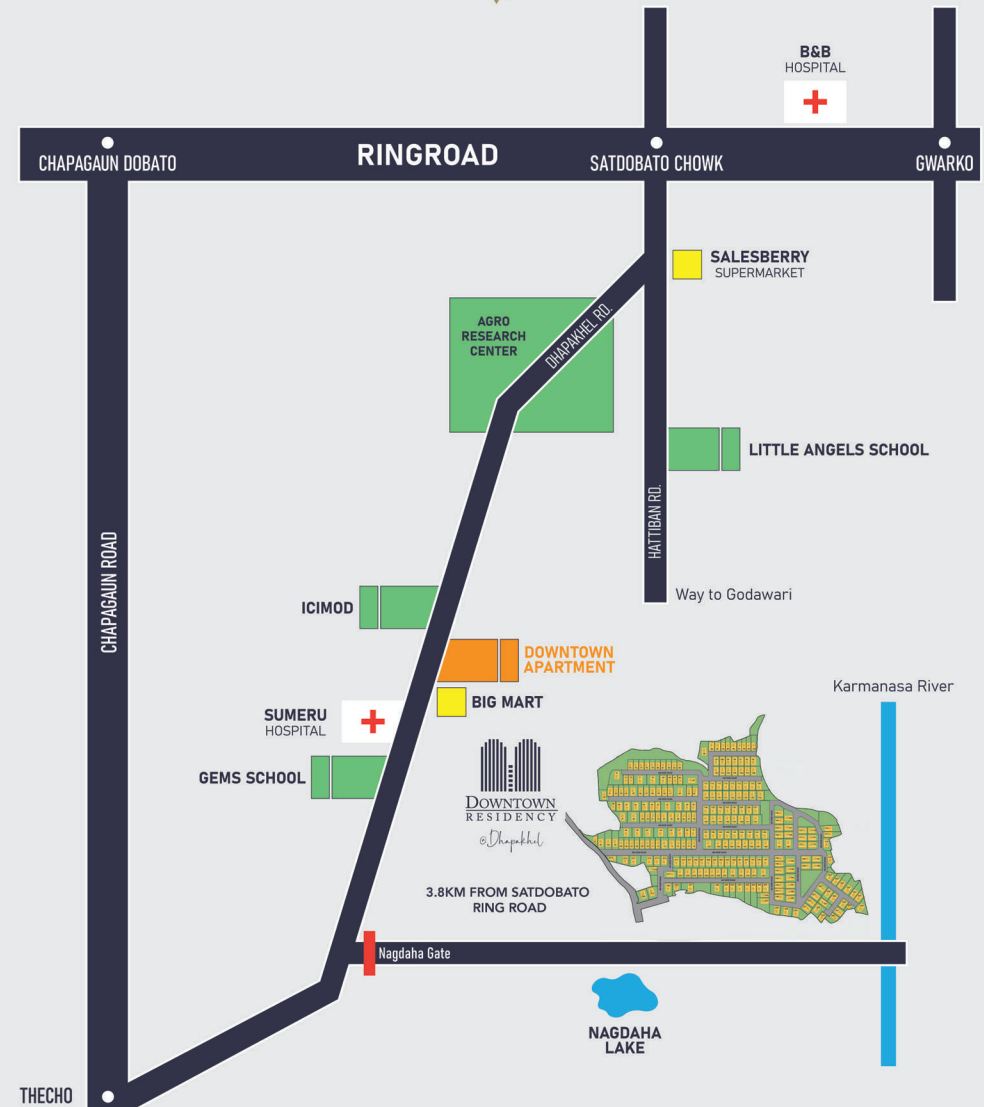
PROJECT DETAILS

AREA DETAILS	80+ ROPANIES
BUNGLOWS	100+ UNITS

HOUSE TYPES

TYPE F	2401.72sq. ft.
TYPE M	2005.70sq. ft.
TYPE S	2220.20sq. ft.
TYPE C	1853.77sq. ft.

THE PERFECT LOCATION



MASTERPLAN







LANGTANG MOUNTAIN
RANGES



PHURBI CHYACHU
RANGES



JUGAL V MOUNTAIN
RANGES



CHO YU
RANGES





TYPE C

MODULAR KITCHEN
SEWAGE TREATMENT PLANT
GROUND WATER TANK
ROOF WATER TANK
CAR PARKING
BIKE PARKING
LAMINATE FLOORING IN ALL ROOMS AND LOBBY
TILE FLOORING ON ALL BALCONIES
ALMUNIUW WINDOWS

TYPE C

Ground Floor



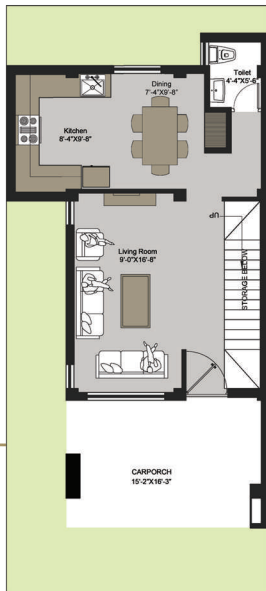
First Floor



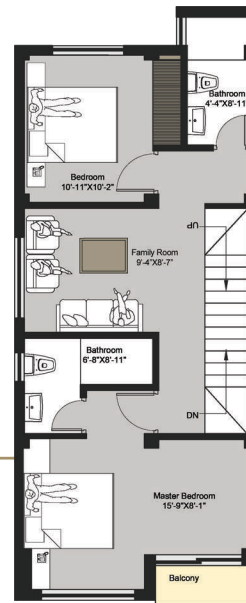
Second Floor



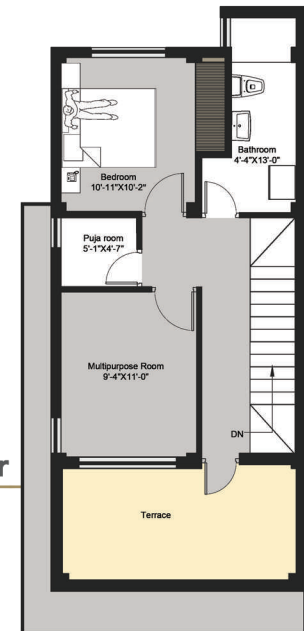
Ground Floor



First Floor



Second Floor





TYPE F

MODULAR KITCHEN
SEWAGE TREATMENT PLANT
GROUND WATER TANK
ROOF WATER TANK
CAR PARKING
BIKE PARKING
LAMINATE FLOORING IN ALL ROOMS AND LOBBY
TILE FLOORING ON ALL BALCONIES
ALMUNIUW WINDOWS

TYPE F



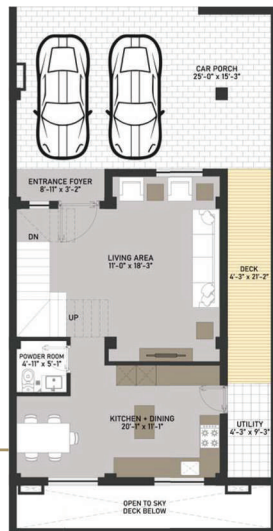
Ground Floor



First Floor



Second Floor



Ground Floor



First Floor



Second Floor



TYPE M

MODULAR KITCHEN
SEWAGE TREATMENT PLANT
GROUND WATER TANK
ROOF WATER TANK
CAR PARKING
BIKE PARKING
LAMINATE FLOORING IN ALL ROOMS AND LOBBY
TILE FLOORING ON ALL BALCONIES
ALMUNIUW WINDOWS

TYPE M



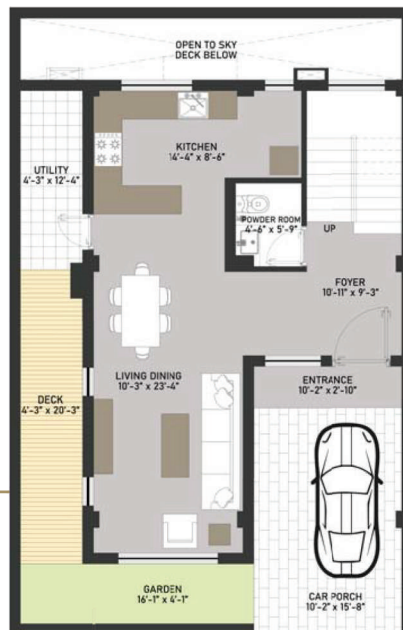
Ground Floor



First Floor



Second Floor



Ground Floor



First Floor



Second Floor



TYPE S

MODULAR KITCHEN
SEWAGE TREATMENT PLANT
GROUND WATER TANK
ROOF WATER TANK
CAR PARKING
BIKE PARKING
LAMINATE FLOORING IN ALL ROOMS AND LOBBY
TILE FLOORING ON ALL BALCONIES
ALMUNIUM WINDOWS



TYPE S



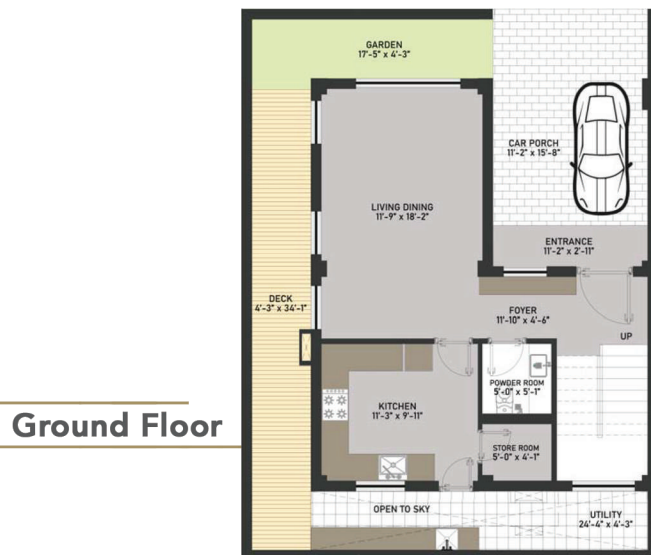
Ground Floor



First Floor



Second Floor



Ground Floor



First Floor



Second Floor

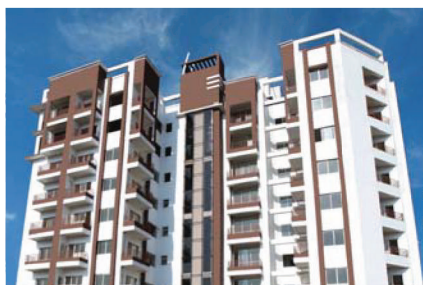
PAST PROJECT



DOWNTOWN RESIDENCY
IMADOLE, LALITPUR



DOWNTOWN APARTMENT
KHUMALTAR, LALITPUR

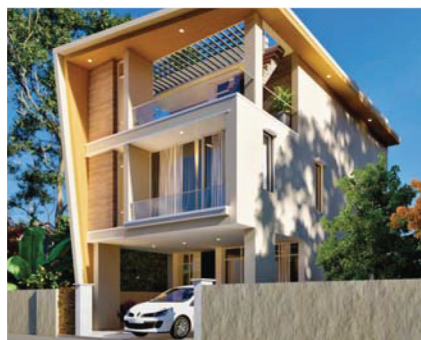


DOWNTOWN APARTMENT
BAKHUNDOLE, LALITPUR

ONGOING PROJECT



DOWNTOWN RESIDENCY
DHAPAKHEL, LALITPUR



DOWNTOWN RESIDENCY
BHAISEPATI, LALITPUR

UPCOMING PROJECT



DOWNTOWN PARK INN
JHAMSIKHEL, LALITPUR



DOWNTOWN PARK INN
CHAKUPAT, LALITPUR





TYPE C



TYPE F



TYPE M



TYPE S

RAISING YOUR 'STANDARD OF LIVING'

DTHOUSING.COM | (977) 980 11 93 707 / 980 11 93 711 / 980 11 93 725

DOWNTOWN HOUSING COMPANY



All residential units have an A rated Energy efficiency pre-certificate, according to the regulations of Government of Nepal. All plans, features and amenities depicted herein are based upon preliminary development plans, and are subject to change. All images and designs depicted herein are artist's conceptual renderings, which are based upon preliminary development plans, and are subject to change. All such materials are shown solely for illustrative purposes. Furnishings are only included for illustration purposes and are not included in each units. The project graphics, renderings and text provided herein are copyrighted works. All rights reserved. Unauthorized reproduction, display or other dissemination of such materials is strictly prohibited and constitutes copyright infringement.